

projects

location
client

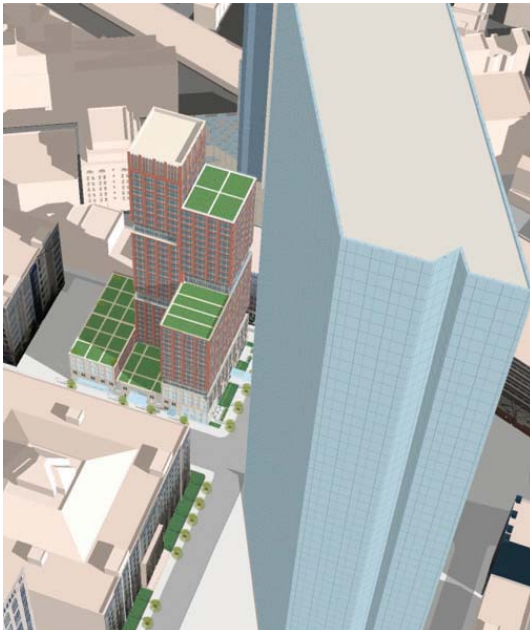
completion date

The Clarendon

Boston, Massachusetts

The Related Companies, Robert A M Stern Architects,
Childs Bertman Tseckares Architects, Inc.

2009



The Clarendon

Located at the corner of Clarendon Street and St. James Avenue in Boston's Back Bay neighborhood, The Clarendon is a new high-rise luxury residential building having both condominiums and rental units in addition to commercial space on the lower levels. The building is in a highly visible site located across from the John Hancock Tower and near Trinity Church.

Working with the project architects, Copley Wolff Design Group is designing streetscape improvements and pedestrian amenities along Clarendon Street and St. James Avenue. Various entrances to the building, including store fronts, restaurants and residential, will be defined.

The Clarendon is intended to become a green building incorporating green design elements and will seek US Green Building Council's Leadership in Energy and Environmental Design (LEED) certification. As a part of this effort, CWDG designed four roof terraces which include interesting private spaces for individual residences as well as public gathering areas. These spaces combine a rich and colorful plant palette that is low maintenance with amenities such as tropical hardwood decking and privacy walls, lighting, and grilling areas.

